



# Norton Navigator

Everyday Life



Portrait



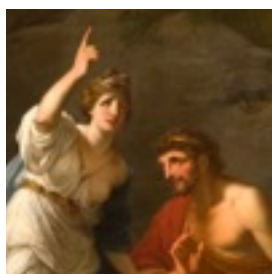
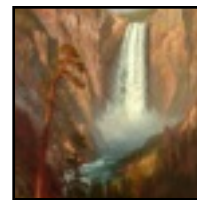
Classical



Wild-life



Landscape



The **characters** in this artwork are Calypso and Ulysses. She is pleading and passionate, while he is apologetic and subdued.

In artistic terms, we call this the **subject** of the painting.

Identify and describe the characters or subjects in your selected artwork. Infer from the painting or sculpture the emotions and character traits from their faces and body language.

Sample Emotion Words:

How does the character feel?

adoration	playful	terrified
amused	pleased	thrilled
determined	prideful	tranquil
devastated	selfish	tormented
distressed	sensitive	uncertain
hurt	shamed	vengeful
infuriated	sincere	vicious
insecure	superior	worried

Sample Character Words:

What kind of person is he or she?

adventurous	courageous	grouchy
affectionate	daring	hateful
ambitious	disrespectful	independent
apologetic	fearless	loyal
brainy	foolish	miserable
cautious	foul	picky
clumsy	glamorous	rowdy
concerned	graceful	stubborn

---

---

---

---

---

---

---

---

---

---

---

---

---

---

---

# Characters

# Art Piece

Alternate Title: \_\_\_\_\_

Artist: \_\_\_\_\_

Type: \_\_\_\_\_

Title: \_\_\_\_\_

Time Period: \_\_\_\_\_



The **action** of this piece is that the horse is trying to violently buck its rider off. The horse is rearing on its hind legs magnificently arching its back for the next powerful jump, while the cowboy balances himself with one outstretched arm and hangs on for dear life with the other.



“Action” does not necessarily mean “excitement.” The action in this piece is that the winged lady is drooping, like she’s about to quietly slip into sleep. She is holding her hair away from her downcast face. Her arms are bent, but relaxed. Her wings are currently outstretched, but look like they may be folded at any second. Her knees are bent. She looks like she’s about to sing a lullaby.



Just as in literature, the **setting** of the painting is determined by the time and place of the work.

The setting in this artwork is in the mountains, next to a river. The time is set in the past about 100 years ago, because the people are using horses and not SUVs to haul their camping stuff through the mountains. It is fall because the men are wearing flannel shirts and hats, and the leaves on the trees are changing color from green to yellow.

Identify and describe the time and place in your selected artwork.

---

---

---

---

---

---

---

---

---

---

---

---

---

---

---

---

---

---

---

---

---

---

---

---

# Setting

# Genre

Everyday Life

Portrait

Circle one:  
Classical

Wild-life

Landscape

Think of the "genre" of a painting like the subject of a book.  
What kind of painting is it?

Everyday life artworks show scenes from real life.

Portraits are works made or inspired by real people.

Classical works tell a part of Greek or Roman mythology.

Wild-life paintings or sculptures focus on animals.

Landscape artworks showcase land or sea.



Based on the abundance of green in this painting, I believe the mood is:

Youthful    Celebratory    Bright  
Fresh    Enthusiastic    Invigorating

The mood of a piece may also describe its tone or atmosphere.  
To help determine the mood of a painting, think of the colors most prevalent in the work.

Circle at least **three** words below that best describe the mood of your artwork. Feel free to add your own terms as well.

- |               |             |             |
|---------------|-------------|-------------|
| light-hearted | welcoming   | violent     |
| peaceful      | warm        | pessimistic |
| nostalgic     | confident   | harmonious  |
| playful       | vivacious   | liberating  |
| dignified     | sympathetic | empowered   |
| hopeful       | optimistic  | tender      |
| terrifying    | heartbroken | painful     |
| merciless     | hopeless    | nightmarish |
| barren        | lonely      | inclusive   |
| hostile       | cold        | bright      |
| ecstatic      | threatening | fresh       |
| foreboding    | suspenseful | vengeful    |
- 
- 
- 

# Mood

# Action

---

---

---

---

---

---

---

---

---

---

What is going on in the work you selected?  
Describe the action of the art piece.